

Key marine projects

Austral Construction



PARKER POINT Marine Offloading Facility (MOF)

Dampier, WA

CONTRACT VALUE

A\$25-50M

Lump sum — Head contractor

Duration

8 Months

Mar 2025—Nov 2025

PRODUCT

Earthworks, Piling, Tie-rods, Concrete and furniture

CLIENT



Head contractor

SNAPSHOT

- Rio Tinto Iron Ore plans to replace three existing bucket wheel reclaimers at Parker Point. The project's main goal is to complete the replacement and related infrastructure upgrades safely and efficiently, while minimizing disruption to stockyard operations.
- Austral was contracted to construct a new Marine Offloading Facility (MOF) at the existing wharf to enable Roll-On Roll-Off delivery of the fully assembled reclaimers onto the site.

SCOPE

- Installation of 55 nos. 1219OD x 20mm Grade 350 CHS steel piles into rock using Overburden Casing Drilling System (OCDS).
- Supply and installation of precast concrete anchor blocks and retaining wall.
- Supply and installation of precast capping beam, tie rods and tieback system.
- Construction of buried concrete ground slab.
- Supply and construction of in-situ concrete mooring block.
- Supply and installation of fender, bollard, mooring bollard rope rails and temporary vessel anchor points.
- Supply and installation of miscellaneous items such as safety ladders, life buoys and cabinet and cathodic protection (pile anodes).
- Final MOF earthworks and revetment



Dampier Bulk Handling Facility (DBHF)

Dampier, WA

CONTRACT VALUE

A\$25-50M
Lump sum — Head contractor

Duration

6 Months
Feb 2025 –Aug 2025

PRODUCT

Piling Works

CLIENT



Head contractor

SNAPSHOT

- DBHF is a wharf structure to be built to support the export of urea in bulk quantities through the Port of Dampier. This Project includes the demolition and removal of decommissioned marine structures, the construction a new land backed wharf.
- Austral was contracted to complete the piling works both onshore and offshore into extremely hard rock.

SCOPE

- Conduct piling works including piling into Igneous rock using Overburden Casing Drilling System (OCDS).
- Installation of both land based and marine based piles including 81 no. of soldier piles, 36 no. of Wharf piles, 12 no. of dolphin piles.
- Grout infill complete with reinforcement cage at socket.
- Piles cut off to level
- Installation of 97 no. of sheet piles between soldier piles and bent piles



Collins Wharf 2-3 Piling Works

Docklands, VIC

CONTRACT VALUE

A\$5M

Schedule of Rates —Sub contractor

DURATION

8 Months

Aug 2024—Apr 2025

PRODUCT

Land Pilling Works

CLIENT

**Mo Aziz
Mateusz Wisniewski**

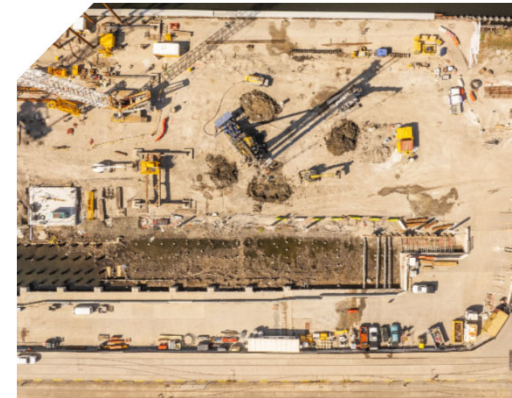


SNAPSHOT

- The Collins Wharf 2-3 project in Melbourne's Docklands precinct involved piling and core retention walls for two new residential apartment developments built on a outstretch of land along the Yarra River. Works on Collins Wharf 2-3 follows Austral & Keller's previous work with Lendlease constructing the foundations of the adjacent development, Collins Wharf One

SCOPE

- Austral's scope incorporated the handling & installation of steel sheet piles and tubular steel piles for the Collins Wharf 2-3 development in Melbourne's Docklands. The overall piling works included the following main items:
- Installation of 140no. PSZ38-700 Paired Steel Sheet Piles at 4no. Locations. Austral's Liebherr LRB155 Piling Rig was utilized for the installation of the sheet piles, incorporating the construction of 2no. Lift Shafts and the Western Retaining Wall Structures. Sheet Piles were pitched and installed in full, single lengths of up to 23m.
- Installation of 93no. 46m long 610mm DIA Tubular Steel Piles, installed in 2no. 23m Segments with an insitu welded splice. Austral's bespoke 'Taree' piling frame was utilized for the installation of tubular piles to conform with the site's very low ground bearing pressure conditions (<70kPa). Piles were driven with Austral's 44-50 Vibro Hammer & IHC S150 Hydro hammer.
- Insitu pile splicing of all 93no. Tubular Steel Piles to achieve design length.



Causeway Link Alliance Bridge Project

Perth, WA

CONTRACT VALUE

A\$5-10M

Lump sum—Head contractor

DURATION

8 Months

Oct 2023—May 2024

PRODUCT

Marine Piling & Construction Works

CLIENT

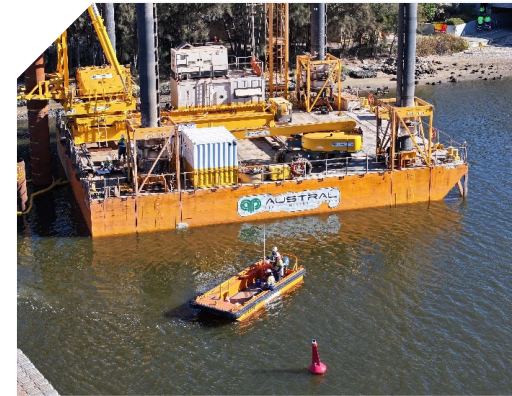


SNAPSHOT

- Austral was contracted to execute marine piling works with the installation of the bridge piles. All works were completed without any disruption to the channel operations.
- Austral had the engineering capability of lifting 185T at 16m utilizing a M16000 Maxer on the Flexifloats barge.

SCOPE

- Austral's scope consisted of the Installation of permanent & temporary piles (SP1), Installation of precast pile caps with reinforcing cages (SP1) and additional engineering was completed for the bridge components of (SP2) such as Pylons and assisted with the Deck segments.
- Six piles were installed at each of the three pylons. Additionally, temporary piles were installed as temporary supports for the bridge structures during the construction process.
- Piles were pitched and driven to sufficient depth utilizing the pc marine leader onboard the Pilbara 100 Jack up barge and specialized piling equipment including IHC Hydro hammer and ICE Vibratory Hammers.
- All works were completed without any disruption to the busy channel operations.



SANTOS VARANUS HUB WELL WORKS

North Western Coast, WA

CONTRACT VALUE

A<\$5M

Lump sum—Head contractor

DURATION

8 Months

Oct 2023—Sep 2024

PRODUCT

Structural Works

CLIENT

Santos

SNAPSHOT

- Santos oil rig platforms have surpassed their design life and wells were earmarked for decommissioning.
- Austral was contracted to perform works to provide the engineering and lift planning services for various decommissioned works involved in the project.

SCOPE

- Austral undertook oil well plug and abandonment campaign as well as structural integrity works across 5 different platforms around Varanus Island.
- Austral crew worked with a large variety of subcontractors and trades and slotted into the decommissioning team seamlessly. Across the 11 months the team successfully responded to two cyclone events which required fast, safe and efficient decision making.
- Austral mobilized the 500T Jack-up & 330T crane in Dampier and prepared it for the campaign in the oil and gas sector adhering to a different set of standards and processes



Onslow Iron Project

Onslow, WA

CONTRACT VALUE

A\$25-50M

Lump sum & SOR—Head contractor

DURATION

11 Months

Dec 2022—Nov 2023

PRODUCT

Land & Marine Piling Construction Works

CLIENT

Darren Hardy



SNAPSHOT

- The Onslow Iron Project Port Facility (OIPPF) is a new port facility for trans-shipment operations within the existing Port of Ashburton to export iron ore.
- Austral was contracted to preform works to provide the access jetty and marine structures with utilization of heavy lift ships.

SCOPE

- Access jetty construction consisted of the Installation of 144lm access jetty with pitching and driving of 19no. piles with a maximum pile length of 35m and Installation of 7no. road modules.
- Marine structure construction consisted of the installation of 4no. Berthing dolphins, 2no. Mooring dolphins, 1no. Positioning dolphin, 7no. Catwalk structures and installation of 1 no. loading platform module.
- Jack-Up Barges 'Pilbara 400'.
- Installation of Headstocks, Mooring dolphins and Berthing dolphins with utilization of heavy lift ships.
- Design and Installation of all temporary works.
- Utilization of Austral's Jack-Up Barges 'Pilbara SEMP' (RCP400 JUB) and Austral's 'Pilbara 100' (RCP100 JUB).
- Utilization of Austral's s280 hydraulic hammer and Austral Casilis piling leader.



CAPE CUVIER SMALL BOAT LANDING

Cape Cuvier, WA

CONTRACT VALUE

A\$5M

Lump sum—Head contractor

Duration

3 Months

Oct 2022—Dec 2022

PRODUCT

**Demolition & Construct
Marine Construction**

CLIENT

Caroline White



SNAPSHOT

- The Small Boat Landing (SBL) is the only facility at Cape Cuvier for landing small vessels and transferring personnel facility for the operations at DSL's Lake MacLeod site. The SBL was built in 1980 and is located under the main shipping jetty.
- Austral was contracted to demolish, fabricate, supply and replace the existing small boat landing reusing the existing piles.

SCOPE

- Demolition & disposal of existing small boat landing structure, upper platform, and access stairs
- Securing existing piles in as built position & pile cutting pile top for preparation
- Temporary works installation and access
- Fabrication management of new small boat landing module, upper platform, access stairs
- Installation of new landing, stairs, ladders and grouting in marine environment
- Under wharf services management and installation works
- Working in & around operational jetty and wharf in near shore marine environment



EDEN WAVE ATTENUATOR PROJECT

Eden, NSW

CONTRACT VALUE

A\$25M

Lump sum —Head contractor

Duration

12 Months

Dec 2021—Nov 2022

PRODUCT

Marine Construction Marine Piling

CLIENT



SNAPSHOT

- Austral Construction engaged by Transport NSW as head contractor to deliver new 366-meter long fixed panel wave attenuator wall structure at Eden on the NSW far South Coast.
- The wave attenuator structure will provide a safer working port area for local and visiting vessels and improve the protection of existing maritime structures within the Snug Cove port area, Eden NSW.

SCOPE

- Design, supply & installation of temporary construction load-out facility (TCLOF) for the handling and transfer of equipment and materials
- Supply & installation of ~130no. vertical and raking piles
- Supply & installation of pre-cast concrete headstocks
- Supply and installation of pre-cast concrete deck panels
- Supply and installation of in-situ reinforced concrete
- Supply and installation of structural steelwork
- Supply and installation of corrosion protection systems for new marine infrastructure
- Supply and installation of electrical and hydraulic services including all wharf furniture, lighting and signage



WALLAROO SHEET PILING

Wallaroo, SA

CONTRACT VALUE

A\$5M

Lump sum & SOR—Subcontractor

Duration

2 Months

Oct 2022—Nov 2022

PRODUCT

Land Based Piling & Tie Rods

CLIENT



SNAPSHOT

- Austral Construction were engaged by Lucas as a specialized piling subcontractor for the Wallaroo Sheet Piling Project. Austral's specialized piling equipment and experienced personnel successfully and safely executed the project within schedule.
- Sheet piling & Tie Rod Installation required accuracy and skilful execution to achieve tight tolerance out at sea whilst working in remote location, near marine environment.

SCOPE

- Installation of 86no. AZ36-700N clutched coated sheet piles up to 20m long utilizing Austral's LR155 Piling Rig.
- Installation of 73no. AZ20-700N clutched Deadman sheet piles up to 3m long utilizing Austral's LR155 Piling Rig.
- Transport & handling of sheets on 23m long extendable trailers & Austral's 80T Senne Bogen Hydraulic Crawler Crane.
- Installation 44no. Jet filters within sheet pile wall.
- Installation of 72no. 50mm Denso wrapped Tie rod system.
- Working in & around marine environment.
- Sheet Piles cut to design level & locally paint repaired.



Swanson Dock West Wharf Upgrade

Melbourne, VIC

CONTRACT VALUE

A\$5-10M

Lump sum—Subcontractor

Duration

12 Months

Jan 2023—Jan 2024

PRODUCT

Land Piling Works

CLIENT

Tanuj Juneja

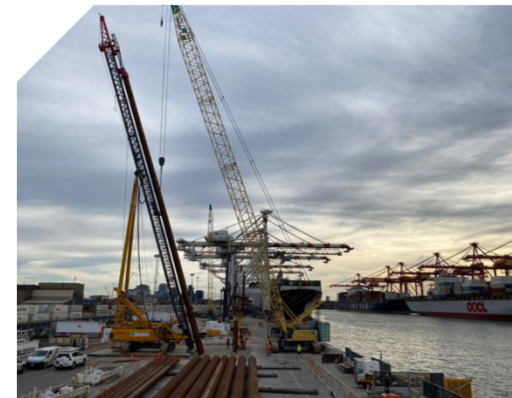
**MCCONNELL
DOWELL**

SNAPSHOT

- The Project includes the construction works and remediation activities within the Swanson Dock precinct to enhance the condition of the existing structures and provide an extended operational design life of the wharf.
- Austral was contracted to perform piling works whilst the surrounding docks were fully operational.

SCOPE

- Austral's scope incorporated the installation of steel tubular piles, mucking of the piles, placement of reinforcement cages and concrete pile plugs in Berth 1 & 2 of Swanson Dock West. The overall piling works include the following main items:
- Installation of Steel Piles at cored holes through existing deck 610 x 17.5 vertical piles (total 152)
- Installation of Steel Piles at 4no. deck Strong Point zones. 914 x 20.6 1:3 raked piles (total 32), 914 x 20.6 1:6 raked piles (total 16), 610 x 17.5 vertical piles (total 12)
- Austral performed the largest single length pile installation via land utilizing Austral's Senne Bogen 6100HD-XLR Piling Rig with a specially built boom to handle the 46m piles at a rake of 1:3.
- Drilling and installation of 6no. Raked Tension anchors with Plant hire and technical assistance from Wessels Drilling (4no. Anchors on 1:3 rake, 2no. Anchors on 1:6 rake)



NOWRA BRIDGE PILING WORKS

Nowra, NSW

CONTRACT VALUE

A\$25M

Lump sum — Head contractor

Duration

14 Months

Oct 2020—Dec 2021

PRODUCT

**Marine Piling & Construction Land
Piling**

CLIENT



SNAPSHOT

- Austral Construction engaged by Fulton Hogan as a specialized sub-contractor to deliver piling and substructure works for the new bridge over the Shoalhaven River in Nowra, NSW.
- When completed the Nowra Bridge Project will provide a new four lane road bridge over the Shoalhaven River, upgraded intersections and additional lanes on the Princess Hwy at Nowra.

SCOPE

- Installation of raking and vertical temporary 'casting yard' piles up to 900mm DIA to support the bridge deck concrete casting and launching equipment.
- Installation of 39no. B54 and B58 1500mm DIA Tubular Steel Piles up to 60m in length (60t ea.). Piles pitched and driven on land and in the river using specialized piling and marine equipment.
- Excavation & cleaning of all 39no. Installed piles via rotary drilling techniques. Works also included the handling and transfer of ~3000m3 of pile spoil.
- Supply and installation of 39no. 1400mm DIA Pile Cages
- Supply and placement of ~3000m3 of S50 in-situ concrete placed by tremie.
- Installation of 8no. 80t pre-cast concrete headstocks.
- Provision of significant temporary works requirements to perform works safely over water.



RIVERBANK STABILISATION

Liverpool, NSW

CONTRACT VALUE

A\$10M

Lump sum—Head contractor

Duration

11 Months

Dec 2021—Nov 2022

PRODUCT

Marine Piling Civil Works

CLIENT

David Khoury

MN BUILDERS

SNAPSHOT

- In order to prevent erosion along the bank of the Georges river and protect their new development, MN Builders approached Austral to perform river bank stabilization works.
- Austral was contracted to install 313no. Tubular steel piles using Austral's Rotopile method. Austral then installed 307no. Sheet piles, as well as delivering and installing ~55,000T of rock along the length of the riverbank works.

SCOPE

- Land-based installation of 5no. Tubular piles using Bauer RTG RG 16T piling rig for observation platform
- Water-based installation of 308no. 406mm Tubular piles using Bauer RTG RG 16T piling rig aboard the C53 Combifloat jack-up barge (max pile length of 12m)
- Water-based installation of 307no. ESZ27-700 piles using Komatsu PC360LC excavator outfitted with vibratory hammer attachment aboard specially configured Austral "24-48" pontoons.
- Installation of 154no. Pre-cast concrete capping beams weighing 1.55t along the length of the piling front
- Installation of 55,000T of rock along the length of the riverbank using Komatsu PC210LCi.



CAPE LAMBERT A DOLPHIN UPGRADE

Cape Lambert, WA

CONTRACT VALUE

A\$150M

Lump sum—Head contractor

Duration

28 Months

Nov 2019—Feb 2022

PRODUCT

Marine Piling Marine Construction

CLIENT

Shane Goggin

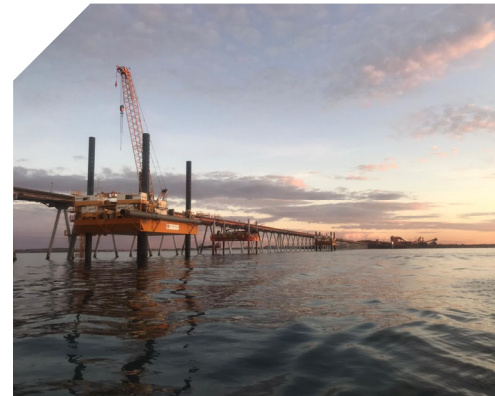
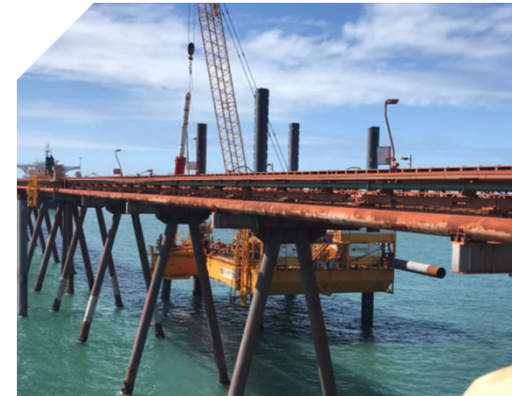
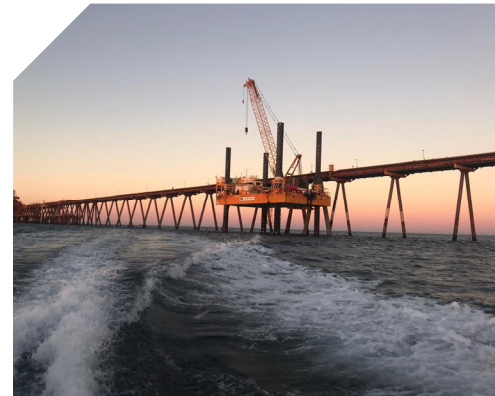


SNAPSHOT

- Rio Tinto's 'Cape Lambert A' loadout facility was slated for upgrade to upkeep and improve the safety for this 1970's era facility. Originally build for ships half its size, this facility now moves US\$2million of iron ore an hour.
- As our largest project to date, Austral will be performing the works needed to upgrade and maintain this vital piece of infrastructure within the safety and shutdown restraints imposed.

SCOPE

- Construction of 18 new dolphin structures with heaviest lift of 125 tonne.
- Approach jetty 2.4km long.
- Driving 120 no. 1200mm dia. Steel piles up to 48m in length.
- 3500 tonne permanent and 200 tonne temporary works fabrication – overseas procurement and delivered by heavy lift ship.
- Piles driven with IHC S-350 & IHC S-280 to loads of 15MN.
- Construction undertaken with 3 Self elevating modular platforms (SEMP's) a 500 tonne SEMP barge with 300T Crane pinned to the deck, a 400 tonne SEMP barge with 280T Crane pinned to the deck, a 250 tonne SEMP barge with 160T Crane pinned to the deck



PORT OF CAIRNS WHARVES UPGRADE

Cairns, QLD

CONTRACT VALUE

A \$25M

Lump sum—Head contractor

Duration

9 Months

Aug 2019—Apr 2020

PRODUCT

Marine Piling Marine Construction

CLIENT

Frank Spannenburg



SNAPSHOT

- As a part of an expansion to facilitate the berthing of larger cruise ships, Ports North requested the upgrade of 595 meters of wharf frontage, whilst retaining pre-existing heritage aspects of the construct.
- Austral was contracted upgrade the wharf, without adversely effecting the operation of adjacent shipping and commercial activity

SCOPE

- Demolition of 2800m2 concrete deck
- Removal of 255 no. timber piles
- Install 30 no. 2.2m diameter steel driven piles up to 31m lengths
- Install 46 no. 610mm diameter steel driven piles up to 36m lengths
- New 880m2 concrete wharf deck
- Install 31 no. 36 tonne precast concrete berthing dolphins
- Supply & install 30 no. cone fenders
- Supply and install 67 no. bollards
- New amenities building
- Casilis Barge (70x20m) with 300t crawler crane, S280 piling hammer and piling gate used to install piles
- Glass Reinforced Plastic (GRP) reinforcement used in concrete dolphin caps



Webb Dock East

Port Melbourne, VIC

CONTRACT VALUE

A\$5M

Lump sum & SoR —Subcontractor

Duration

5 Months

Sep 2018—Feb 2019

PRODUCT

Land and Marine Piling

CLIENT

Michael Harris

**McCONNELL
DOWELL**

SNAPSHOT

- Austral Construction were engaged by McConnell Dowell as a specialized piling subcontractor for the Webb Dock 1 East Wharf Upgrade Project for Toll Transport and the Port of Melbourne Corporation.
- Works form part of Toll's \$311M upgrade of its Bass Strait freight operations, which also includes 2no. new 210m RORO cargo vessels and an upgrade of the Port of Burnie's Berth 4 Wharf in Tasmania.

SCOPE

- Sub Arc splicing of 12no. 1067mm OD tubular steel piles to AS1554.1.
- Supply and Installation of 204No. 350x350 precast piles.
- Installation of 182No. (91 Pairs) AZ38-700 at 28.2m to 31.8m long sheet piles. Sheet piles were driven in pairs.
- Handle, pitch & drive 12no. Ø1067mm 36m long tubular steel piles on a 1:4 rake for the wharf's new onshore and offshore mooring dolphin structures.
- The pile were driven to depth using either the IHC S90 or the S120 hammer depending on soil condition.
- Works were completed using Austral's Senne Bogen 6100 HD XLR Piling Rig, Banut 655 Piling Rig, Taree Piling Frame & Keller's Junttan PM25 Piling Rig. Significant temporary works was required for the installation of the 8no. marine mooring dolphin piles.



CHANNEL MARKER REPLACEMENT

Port Hedland, WA

CONTRACT VALUE

A\$25-50M

Lump sum —Head contractor

Duration

12 Months

Feb 2017—May 2019

PRODUCT

Marine Construction Marine Piling

CLIENT



SNAPSHOT

- Pilbara Port Authority needed to replace the existing channel markers along their 22 nautical mile corridor into Port Hedland.
- Austral was contracted to perform works to provide the visual markers that line the shipping route. All works were completed without any disruption to the regularly scheduled Port Hedland shipping channel operations.

SCOPE

- The design and supply of new channel markers
- Removal of the beacon tops on the existing piles
- Removal and extraction of daymarks from the existing piles
- Extraction and disposal of the 35no. existing channel marker piles (Varies from 1350mm OD and 37m length to 1000mm OD and 18.5m length)
- Installation of 35 new replacement channel marker Piles
- Re-installation of the pile tops, addition of new daymarks, and all necessary refurbishment/ touch-up works
- Commissioning of the Beacon tops and new channel markers
- Utilization of Austral's Jack-Up Barges 'Pilbara SEMP' (RCP400 400t JUB) and 'Pilbara 250' (RCP250 250t JUB), along with Austral's suite of hydraulic and vibratory hammers.



FMG TUG INFRASTRUCTURE

Port Hedland, WA

CONTRACT VALUE

A\$5M

Lump sum —Subcontractor

Duration

4 Months

Nov 2017—Feb 2018

PRODUCT

Marine Construction Marine Piling

CLIENT

Steve Tyter

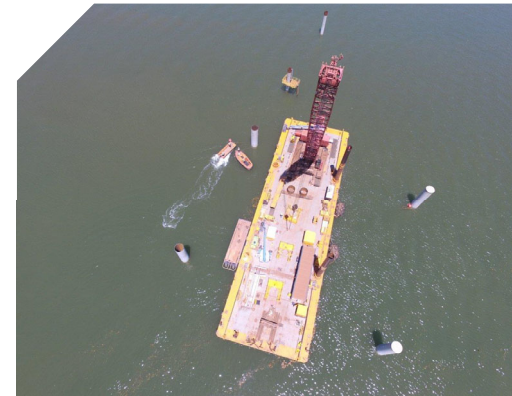


SNAPSHOT

- As part of a successful bid to provide towage services, Pilbara Marine required the design and construction of a Tug service berth, a maintenance platform, cyclone moorings, and navigational aids for Fortescue Metals Group (FMG) in Port Hedland, WA
- Austral was subcontracted to install piles for the new facility designed for cyclonic loading experienced in the region

SCOPE

- Installation 25 No. piles from Austral barges including: jack up barge and Westsea barge with 400T crane and S-500 IHC pile driving hammer. Piles driven were 7 No. 1219mm OD walkway piles, 17 No. 2000mm OD mooring piles, and 1 No. 1219mm OD navigation aid pile
- Cutting piles to design level
- Installation of new headstocks and walkways
- Installation of floating walkways and associated access ramps
- Removal of selected existing navigation aids, and installation of new replacement navigation aids
- Installation of a large fender to existing dolphin.



WHEATSTONE PROJECT

Wheatstone, WA

CONTRACT VALUE

A\$10M

Lump sum —Subcontractor

Duration

8 Months

Jul 2013—Mar 2014

PRODUCT

Land Piling Civil Construction

CLIENT

Fred Brunelle

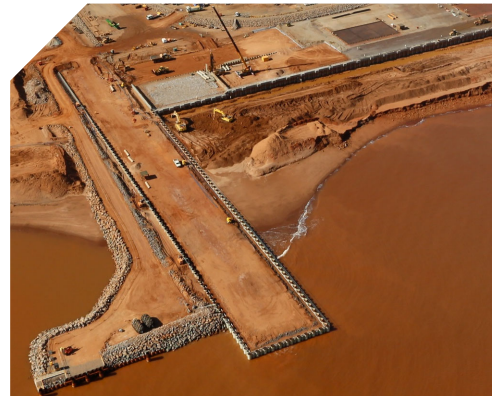


SNAPSHOT

- Chevron required a new Materials Offloading Facility at Wheatstone to allow for the delivery of materials to their LNG Plant.
- Austral was contracted by the Besix Theiss Joint Venture (BEST JV) to install the combi-pile wall comprising alternating steel tubular piles and sheet pile, as well as the sheet pile anchor wall. Works were completed with Austral's Banut 655 and Bauer RG16 piling rigs.

SCOPE

- Combi-wall comprised of 236no. 1320mm diameter clutched tubular steel piles and 244no. AZ18-700 sheet piles
- 500 lineal metres of anchor wall comprised of 377no. AZ18-700 sheet piles, and 199no. tie rods



Contact us

✉ ac@australconstruction.com.au

🌐 australconstruction.com.au

in [/austral-construction-pty-ltd](https://www.linkedin.com/company/austral-construction-pty-ltd)

Key Contacts:

David Brough – General Manager Marine – 0475 731 634

Nick Hewitt – Estimating and BD Manager – 0417 448 455

Michael Wilkinson – National Engineering Manager – 0429 004 631

Chris Brown – Senior Project Development Manager – 0417 911 447

